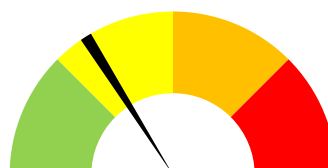




## Health Department



Seward County  
Community Transmission  
Severity Scorecard  
Index Rating: 3  
Period of 6/30/21-7/7/21

Indicator	Last Week's value and Level	Current value and Level
**Weekly case incidence: Number of new cases during a week	0	3
Trend in incidence: Difference between County case count in Current week compared to previous week	0.0% Unchanged	300.0% Increase
**Percent positive test (% positive tests out of all test performed)	0%	4%
Hospital occupancy rate: percentage of occupied medical and surgical beds	57%	38%
Public Health System capacity stress	0	0
SUMMARY INDEX SCORE	1	3

*\*Updated each Thursday by noon*

*\*\*The weekly case incidence and the percentage positive test indicators receive double score because of their great importance as indicators of transmission level.*

SUMMARY INDEX SCORE INTERPRETATION	Green	0 Points	Score 0 = Green
	Yellow	1 Point	Score 1-8 Yellow
	Orange	2 Points	Score 9-16 Orange
	Red	3 Points	Score 17-21 Red

### Community Transmission and Severity Indicators

Indicator	Low	Moderate	High	Uncontrolled	Notes
	(Index score: 0)	(Index score: 1)	(Index Score: 2)	(Index Score : 3)	
Weekly case incidence: Number of new cases during a week *	<11	12-50	51-120	>120	These are case counts. See technical notes for explanation of case rates
Trend in incidence: Difference between county case count in current week compared to previous week	Decreasing	Unchanged	Increasing by 10-15 percent over previous week	Increasing by 16 or more percent over previous week	Only variations of +/- 10% are counted as an increase or decrease
Percent Positive test (%positive tests out of all tests performed)*	<10%	10-15%	15-30%	30% or greater	
Hospital occupancy: Percentage of occupied Medical and surgical beds	65% or less 40 Beds	66-68% 42 Beds	69-74% 45 Beds	>75% 50+ Beds	Total Census of rooms that are manageable by available staff. 61 beds
Public Health System Capacity Stress	Open and making appointments	Doors locked and limited appointments	Doors locked and only providing primary services	Locked and COVID Only appointments	Based on a separate capacity scorecard for public health that includes criteria